



Medical Check Valves with extensions





Medical Check Valves with extensions

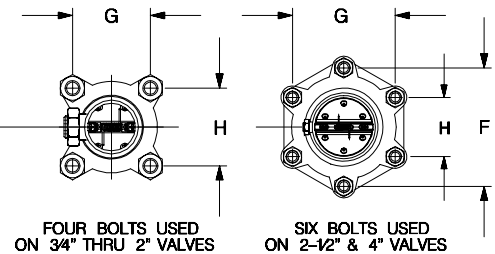
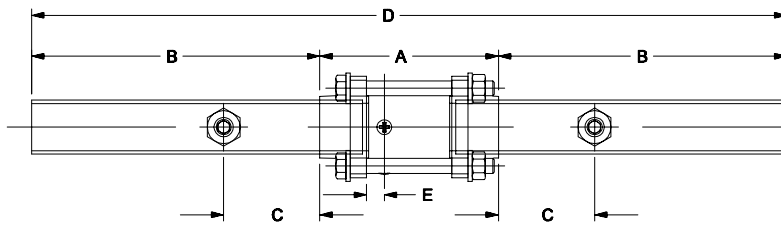
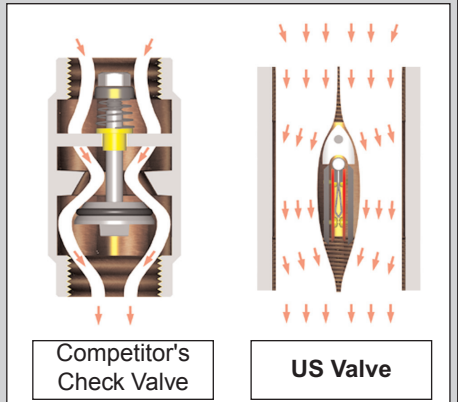
Valve Design:

Valves are designed for working pressures of up to 300 psig. The body is field removable for servicing without cutting or disassembling of lines. All valves are supplied clean and prepared for oxygen service as per CGA G-4.1. Valves are capped and packaged in a polyethylene bag to keep them clean. Valves are provided with type-K copper tube extensions for connections on the pipeline.

Features:

- K Copper Extensions
- Dual Gauge Port Design
- 3-Piece design for ease of maintenance
- Viton/EPDM
- 100% hydrostatically tested
- Valve port larger than copper tube flow area
- Highest CV possible

Valve Comparison showing Low Pressure Drop design



NOTE:
BRAZING MATERIAL - ALLOY Bag34

Dimensions: (inches)

Valve Size	Part Number	A	B	C	D	E	F	G	H
3/4"	51075-01	3.21	6.00	2.00	15.21	.33	-	1.43	1.43
1"	51100-01	3.72	6.00	2.00	15.72	.33	-	1.62	1.62
1-1/4"	51125-01	4.06	6.00	2.00	16.06	.40	-	2.00	2.00
1-1/2"	51150-01	4.45	6.00	2.00	16.45	.40	-	2.25	2.25
2"	51200-01	5.18	6.00	2.00	17.18	.40	-	2.86	2.86
2-1/2"	51250-01	6.10	6.00	2.00	18.10	.50	4.94	4.28	2.47
3"	51300-01	6.76	6.00	2.00	18.76	.50	5.51	4.77	2.75
4"	51400-01	8.56	6.00	2.00	20.56	.50	7.46	6.46	3.73

NOTE: TYPICAL DIMENSIONS ONLY. NOT TO BE USED FOR CONSTRUCTION WITHOUT CONSULTING FACTORY. SUBJECT TO CHANGE WITHOUT NOTICE.



U.S.Valve LLC
 810 Oregon Avenue
 Linthicum, Maryland 2109
 tel: (410) 789-0999
 fax: (410) 789-1009
 email: info@usvalve.com
 website: www.usvalve.com